



Clayton High School is located in the City of Clayton, six miles west of St. Louis. It is the hub of the St. Louis Metropolitan area. Combining a bustling downtown with quiet, secure residential neighborhoods, Clayton is the seat of St. Louis County. With a population of 15,935 residents, it is also home to Forbes and Fortune 500 headquarters. Clayton is recognized as the urban center of St. Louis.

CEEB/ACT CODE 260645
T: 314.854.6650 F: 314.854.6626
WWW.CHS.CLAYTON.K12.MO.US

COUNSELING DEPARTMENT

Carolyn Blair
Director of CHS Student Services
College Counselor
Carolyn_Blair@clayton.k12.mo.us

Chat Leonard
College Counselor
Chat_Leonard@clayton.k12.mo.us

Mark Snyder
12th Grade Counselor
Mark_Snyder@clayton.k12.mo.us

Anthony Henderson
11th Grade Counselor
Anthony_Henderson@clayton.k12.mo.us

Tobie Smith
10th Grade Counselor
Tobie_Smith@clayton.k12.mo.us

Alice Morrison
9th Grade Counselor
Alice_Morrison@clayton.k12.mo.us



Accredited by the North Central Association of Colleges and Secondary Schools, Clayton High School has received the highest rating by the Missouri Division of Public Schools.

TEST SCORES
SAT
 Critical Reading: 633 • Math: 657
ACT
 Composite: 25.4

STATS

- Class of 2008: 183
- Mean class size: 20
- Enrollment 9–12: 854
- 8-period school day
- 2 semesters
- Expenditure per pupil: \$14,086.00
- 89.4% of faculty hold advanced degrees



GPA FOR CLASS OF 2008

Grade Point Average is computed using all graded courses which provide credit.

4.0+	=	15 students
3.5 – 3.99	=	44 students
3.0 – 3.49	=	48 students
2.5 – 2.99	=	29 students
2.0 – 2.49	=	23 students
1.0 – 1.99	=	24 students
Below 1.0	=	0 student

Median Cumulative GPA = 3.05

GRADING SCALE

A+ = 4.3	C+ = 2.3	P = 0.3
A = 4.0	C = 2.0	F = 0.0
A- = 3.7	C- = 1.7	
B+ = 3.3	D+ = 1.3	CR = Credit
B = 3.0	D = 1.0	NC = No Credit
B- = 2.7	D- = 0.7	I = Incomplete

ADVANCED PLACEMENT

Honors and AP courses are offered in nearly every discipline. More than 75% of all students take four years of English, math, science, and social studies. English classes require five major papers per semester, each individually reviewed with the teacher and revised based on teacher suggestions. English teachers teach three periods each day in order to use the remaining five periods for student conferences and planning purposes.

SUBJECT	No. Tested	% 3, 4, or 5
Biology	43	93%
Calculus AB	16	94%
Calculus BC	27	96%
Chemistry	26	100%
English Language	29	97%
English Literature	38	95%
Environmental Science	36	83%
European History	32	88%
French Language	6	100%
German Language	9	100%
Government and Politics: US	9	89%
Human Geography	7	100%
Macroeconomics	17	88%
Music Theory	5	100%
Physics B	14	100%
Psychology	26	73%
Spanish Language	22	100%
Statistics	9	89%
Studio Art	4	75%
US History	18	89%
World History	43	91%
Total	438	92%

Note: AP scores are reported when there are five or more test takers.

GRADUATION REQUIREMENTS

22.0 Units of Credit to Graduate

- 4.0 Units in English
- 3.0 Units in Social Studies
- 3.0 Units in Science
- 3.0 Units in Math
- 1.0 Unit in Fine Arts
- 1.0 Unit in Career and Technology Education
- 0.5 Unit of Health
- 1.0 Unit of Physical Education
- 7.5 units of Electives

APPLICATION AND MATRICULATION

The following data cover five years of CHS application and matriculation.

Year	Applicants	Colleges Applied to	Colleges Attended	% Public/Private	% In/Out of State
2004	203	309	103	46/54	42/58
2005	215	288	109	49/51	38/62
2006	199	293	104	47/53	44/56
2007	224	353	112	43/57	34/66
2008	175	296	110	45/55	35/65

CLASS OF 2008

6 National Merit finalists
9 Commended Students

CLASS OF 2008 COLLEGE MATRICULATION

94% of the Class of 2008 is attending a four or two-year college/university. One or more members of the Class of 2008 were admitted to the institutions listed below. The numbers in parentheses indicate the number of students who are attending these institutions.

Adelphi University (1)
Alabama A&M University
U of Alabama
American University
American U of Central Asia (1)
Amherst College
Arizona State University
U of Arizona (1)
U of Arkansas at Pine Bluff
Ball State University (1)
Bard College
Barnard College (1)
Beloit College (1)
Bennington College
Boston College
Boston University (1)
Bowdoin College
Bradley University
Brandeis University
Brigham Young University (1)

Colorado State University
Columbia College - Chicago (1)
Columbia College - MO (1)
Columbia University (1)
Concordia Univ. - Irvine (1)
Concordia Univ. -Wisconsin
Connecticut College
Cornell College
Cornell University (1)
Creighton University (1)
Dartmouth College (1)
Davidson College
U of Dayton
U of Delaware
Delta State University (1)
Denison University (2)
U of Denver
DePaul University (5)
DePauw University (1)
Drake University
Duke University (2)
Earlham College
Eckerd College
Elmhurst College
Emory University
U of Evansville
Evergreen State College
Fairfield University
Florida State University
University of Florida
Fontbonne College
Fordham University
Full Sail Real World Education
George Washington Univ. (1)
Goucher College
Grambling State University
Grinnell College (1)
University of Guelph (1)
Hampshire College (1)
Harrington Institute of Interior Design (1)
Harris-Stowe State College (2)
Harvard University (1)
Hendrix College (1)
Hiram College
Humboldt State University
University of Illinois at Urbana-Champaign (2)
IL Institute of Technology (1)
Illinois Wesleyan University (1)
Indiana U at Bloomington (7)
International Academy of Design & Technology (1)

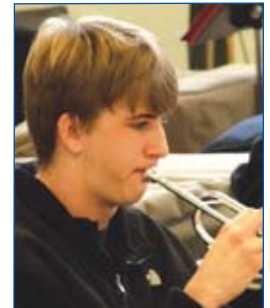
U of Iowa
Ithaca College (1)
Jackson State University (1)
James Madison University
John Carroll University
John Hopkins University
Kansas State University (1)
U of Kansas (2)
Lake Forest College (1)



Landmark College (1)
Lasell College (1)
Lawrence University
Lewis & Clark College
Lincoln University (2)
Lindenwood University (1)
Loyola College in Maryland (1)
Loyola Marymount Univ. - (1)
Loyola Univ. Chicago
Loyola Univ. New Orleans
Lynn University
Marietta College
Marlboro College
Marquette University
U of Maryland-College Park
Maryville University (1)
MA Institute of Technology (1)
McDaniel College (2)
McGill University
McKendree College
Miami University-Ohio (3)
U of Miami (2)
U of Michigan
Miles College (1)
Millikin University
U of Minnesota, Duluth
U of Minnesota, Twin Cities
U of Mississippi (2)
Missouri State University (2)
MO Univ. of Science & Tech.
MO Western State College (6)

U of Missouri-Columbia (7)
U of Missouri-Kansas City (1)
U of Missouri-St. Louis
Murray State University
New College of Florida (1)
New England Institute of Art
U of New Hampshire
U of New Haven
New York University
U of NC-Chapel Hill
Northeastern University (2)
Northwest MO State Univ.
Northwestern University
Oberlin Conservatory of Music College
Occidental College (1)
Ohio University (1)
Ohio Wesleyan University
University of Oregon
Otterbein College
University of the Pacific
U of Pennsylvania (1)
Pitzer College
Pomona College (1)
Princeton University
U of Puget Sound (1)
Purchase College
Purdue University
Queens University
Quincy University
Ranken Technical College (1)
U of Redlands (1)
Rensselaer Polytechnic Institute (1)
Rice University
U of Richmond
Ringling School of Art & Design (1)
Roanoke College
U of Rochester
Rockford College
Rockhurst University
Rutgers, New Jersey at Newark
Saint Louis University (5)
U of San Diego
U of San Francisco
Santa Clara University (1)
Savannah College of Art & Design (1)
Seattle University (1)
Sewanee: U of the South
Southeast MO State U (2)

U of Southern California (1)
SIU-Edwardsville (1)
Southern Methodist U (4)
Spring Hill College
St. John's College (1)
St. L. College of Pharmacy (1)
St.L. C. C.-Florissant Valley (3)
St.L. C. C.-Forest Park (8)
St.L. C. C.-Meramec (10)
St. Olaf College (1)
Stanford University (2)
Suffolk University
SUNY College at Fredonia
Swarthmore College
Syracuse University (1)
U of Texas-Austin (1)
Trinity University (1)
Truman State University
Tufts University
Tulane University (5)
U of Tulsa (1)
Vanderbilt University (1)
U of Vermont
Washington University (6)
Webster University (3)
Western Michigan U
U of Western Ontario
Wesleyan University
Westminster College



Wheaton College-MA (1)
Whittier College
Williams College
U of Wisconsin-Madison (1)
Wittenberg University (1)
College of Wooster
Wright State University
Xavier University
Xavier U of Louisiana
Yeshiva University (1)



Brown University (1)
Butler University
U of CA at Berkeley (1)
U of CA at Los Angeles
U of CA at Riverside
U of CA at San Diego
CA Institute of Technology (1)
Carnegie Mellon University
Case Western Reserve U
U of Central Missouri
Chapman University
College of Charleston (3)
U of Chicago
U of Cincinnati (1)
Clark University
Clarke College
Coastal Carolina University
U of Colorado at Boulder (2)
Colorado College (1)